

ColorPartner GmbH - Measuring Systems -

ColorPartner is a developer and manufacturer of colour measurement devices, laser distance measurement systems, wire winding systems and associated accessories. ColorPartner was founded in 1993. Initial products were image and PostScript PC-interface systems for all kind of high end scanners.

Today we are producing in a broad range of industries: printing, wire, textile, chemical, ceramics and automotive industries. Wherever electronic, optical and automation know how is necessary.

Our colour measurement products are used and known worldwide.

Persons of contact:

Mr. Wolfgang Schulz	<WS@colorpartner.de>	managing director
Mr. Ingmar Brumm	<IB@colorpartner.de>	managing director
Mr. Karsten Höfer	<KH@colorpartner.de>	production manager

ColorPartner GmbH
Holzkoppelweg 5
24118 Kiel
Germany

Phone: ++49-431-200878-0
Fax: ++49-431-200878-9
Email: info@ColorPartner.de
Internet: www.ColorPartner.de



ColorScout AX and ColorScout AXT

The ColorScout AX is a high speed, high precision automatic chart scanspectrophotometer on air cushion basis with air cooled high performance optical light probe. This air cushion technology ensures a preservative treatment of the charts. The continuous airflow also helps to keep the charts free from dust.

The scanning time for the IT8.7/3 chart with 928 patches is about 4.5 min, for the ECI2002 chart with 1485 patches it is about 7 min.

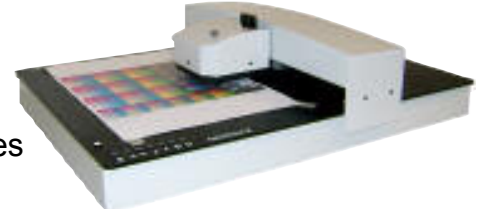
The charts can be designed in any format.

The ColorScout AX is available in the following standard sizes

A3+, **A2+** and **750 mm x 1050 mm**, also we manufacture other sizes on request.

The standard size of the transmission option of the ColorScout AXT is A3+.

ColorScout AX



ColorScout AXT (in transmissive mode)



The free available software **ColorChart**, which drives the ColorScout A+ and AX, requires Windows 2000, XP, Vista or higher.

Following functionalities and data acquisitions are implemented: Density, L*a*b*, dE*, XYZ, xyY, adjustment of slope and Yule-Nielsen factor, Supports color profiling, Reading of charts (e.g. IT8.7/3-Charts, ECI2002-Charts) automatically, Creating charts, Excel interface, barcode reader support, ...

ColorScout AX in 750 mm X 1050 mm format



ColorScout X

The ColorScout X is a simple to use one dimensional moving system for automating a EyeOne or other scanning devices for print control. It is available in different lengths and with a feed through option.

ColorScout X in 1105 mm format



ColorScout A+

The ColorScout A+ is a **XY measuring table**, that can **automate** all the measurements you manually do now. This gives you more **safety** and frees you for other things to do.

It is best used in applications where you have to measure many patches (even multiple measurements for averaging) on a target. These targets can be printed sheets of **paper, textiles, ceramics or metals**. There are many areas, where it can be used.

It is not only used for measuring colourimetric values, but also gloss, haze, thickness and others.

It is available in the standard sizes **A3+, A2+** and **750 mm x 1050 mm**, also we manufacture other sizes on request. Standard maximum measurement height (material thickness) is 30 mm.

Our free software **ColorChart** for easily creating and measuring charts has a rich featured Excel interface including macro call. If there is any function, you would like to see in **ColorChart**, please contact us.

The **ColorScout A+** has already been **successfully** installed at many customer sites like Agfa, Armstrong World Industries, AVA CAD/CAM, Bayer, CM/PCM -Services, Dai Nippon Printing, Donnelley Europe, Ecolab, Ergo-Soft, Euro Digital, Color Solutions, Henkel, Hollanders Printing Systems, NexPress, Océ, Stork, Sun Chemical, Volkswagen, Wide Gamut, Xerox, X-Rite, Zumtobel Staff, ...

Here is a shortened list of the devices, which are supported by the ColorScout A+ (We adapt further devices on request):

Byk-Gardner:	Mercury	CM-2600d
old micro tri gloss	Check	
new micro TRI gloss		
color guide		
spectro guide		
ColorPartner:	GretagMacbeth:	X-Rite:
ColorScout S	Spectrolino	SP61, SP62, SP64
ColorScout AX	EyeOne	962, 964, 939
ColorScout AXT	SpectroEye	938, 948, 968
	D19	504, 508, 518, 520,
		528, 530, 538
	KonicaMinolta:	MA68-II
	CM-2500c	
Datacolor:	CM-2500d	Others:
		full list on website

If you need any special solution, please don't hesitate to contact us!

ColorScout A+ for **ColorScout S**



ColorScout A+ for **Spectrolino**



ColorScout A+ for **micro tri gloss**



ColorScout A+ for **Mercury**



ColorScout A+ for **EyeOne**



ColorScout A+ for **CM-2600d**



ColorScout A+ for **SP64**



ColorScout A+ for **spectro guide**



ColorScout A+ for **SpectroEye / D19**



ColorScout A+ for **XRite 500**



DigiDens-Densitometer-Family

The densitometers to measure:

- bw-reflection and -transmission
- colour-reflection and bw-transmission

Suitable for:

- measuring films
- measuring plates
- measuring prints

Available:

- with or without light source for transmission
- with or without serial interface

2.5 and 3.3 mm apertures are available.

For more information, please see our website!

Special solutions

Automatic sample handling for quality control.

Special versions of the ColorScout A+.

Special sample holders.

Self adjusting wire winding system.



This brochure has been supplied to you by:

DigiDens T6R



DigiDens T6RL



DigiDens T6CR

